



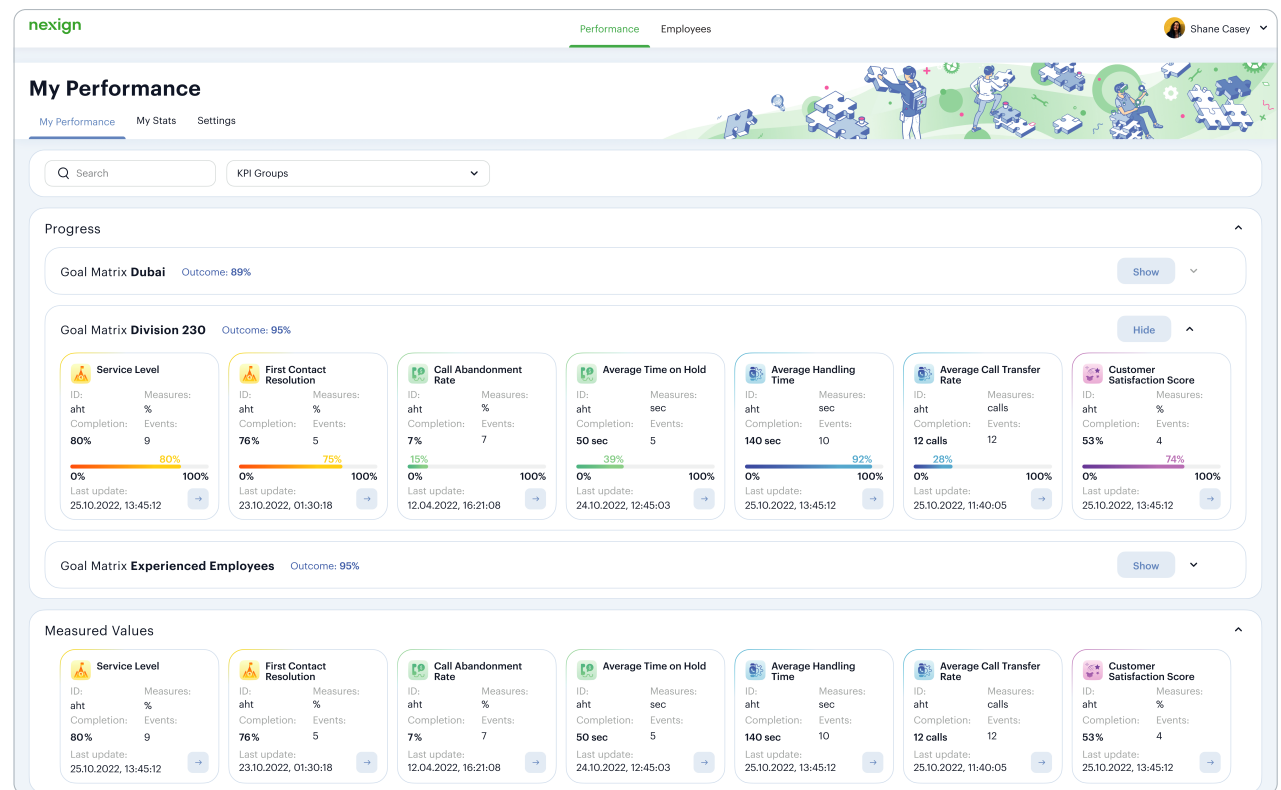
Nexign KPI Management

Nexign KPI Management ensures automated KPI data gathering and provides an interactive dashboard to view employee performance goals. Stakeholders can manage the KPI process, from identifying to assessing a relevant set of KPIs, such as Average Handle Time (AHT) or First Call Resolution (FCR), while employees can monitor their performance and improve the quality of service.

Automated data aggregation from heterogenous sources and final KPI calculation

Flexible setting and changing of KPIs for groups of employees

Dynamic decisions upon comparison of plans with actual progress



Achieving Operational Excellence Through Transparent Assessment of Employee Performance

Automated KPI Calculation

- Blended data aggregation
- Use of additional indicators, such as knowledge assessment and survey results

Assessment Scorecards and Templates

- Creation of unique sets of KPIs with complex relationships
- Flexible matching of employees with goals through tags

Final KPI Calculation and Progress Visualization

- Interactive dashboard to monitor employee performance
- Dynamic updates on progress in real time or for a given period

Data for the Pay-for-Performance Plan

- Bonus calculation based on progress: salary percentage bonus or monetary value
- Data export to external systems

Nexign KPI Management Benefits

Organization

- Drive employee motivation and decrease employee churn through transparent KPI monitoring
- Boost additional growth of revenue and foster customer loyalty thanks to committed specialists

Stakeholders

- Reduce time on data aggregation and analysis through process automation
- Take timely, data-driven decisions on how to improve results and set monthly goals

Employees

- Control performance through online-monitoring of personal KPIs
- Profit from increased monthly bonuses as a result of boosted performance and higher customer satisfaction rates

IT

- Leverage new data sources and develop the integration with internal systems on your own by using open-source components